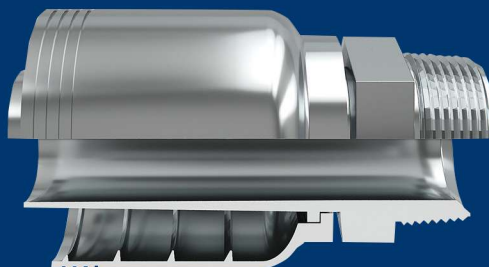


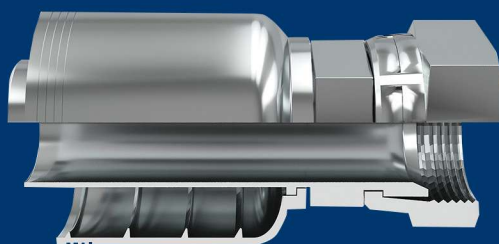
RX912-MP



Macho fijo recto rosca NPTF

HOSE DASH	ROSCA	Part #	IMPERIAL EASTMAN	DAYCO	PARKER
-06	3/8x18	RX912-06-06MP	HW-06-06MB	BW-06-06MP	10171-6-6
-08	1/2x14	RX912-08-08MP	HW-08-08MB	BW-08-08MP	10171-8-8
-12	3/4x14	RX912-12-12MP	HW-12-12MB	BW-12-12MP	10171-12-12
-16	1x1 1-1/2	RX912-16-16MP	HW-16-16MB	BW-16-16MP	10171-16-16
-20	1-1/4x1 1-1/2	RX912-20-20MP	HW-20-20MB	BW-20-20MP	10171-20-20
-24	1-1/2x1 1-1/2	RX912-24-24MP	HW-24-24MB	BW-24-24MP	10171-24-24
-32	2x1 1-1/2	RX912-32-30MP	HW-32-32MB	BW-32-32MP	10171-32-32

RX912-FJX



Hembra giratoria rosca JIC 37°

HOSE DASH	ROSCA	Part #	IMPERIAL EASTMAN	DAYCO	PARKER
-06	9/16x19	RX912-06-06FJX	HW-06-06NJ	BW-06-06FJX	10671-6-6
-08	3/4x16	RX912-08-08FJX	HW-08-08NJ	BW-08-08FJX	10671-8-8
-10	7/8x14	RX912-10-10FJX	HW-10-10NJ	BW-10-10FJX	10671-10-10
-12	1-1/16x12	RX912-12-12FJX	HW-12-12NJ	BW-12-12FJX	10671-12-12
-16	1-5/16x12	RX912-16-16FJX	HW-16-16NJ	BW-16-16FJX	10671-16-16
-20	1-5/8x12	RX912-20-20FJX	HW-20-20NJ	BW-20-20FJX	10671-20-20
-24	1-7/8x12	RX912-24-24FJX	HW-24-24NJ	BW-24-24FJX	10671-24-24
-32	2-1/2x12	RX912-32-32FJX	HW-32-32NJ	BW-32-32FJX	10671-32-32